



Korniche bi-folding door operation & maintenance



01642 309 576

www.gfdhomes.co.uk





Korniche Bi-folding door guide to operation and maintenance



Components



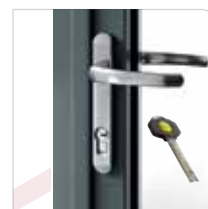
D handle



Bottom mullion roller



Magnetic catch



Yale 3 star lock barrel & key



Top guide hinge



Top mullion guide



Main hinge



Shoot bolt handle and key



Bottom roller hinge



Trickle vents
2500mm² airflow
per vent

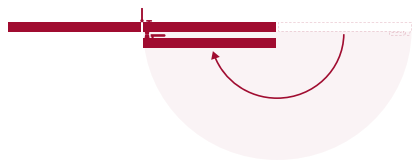




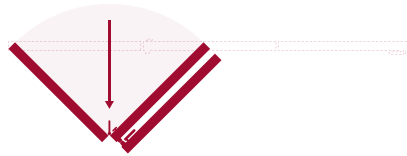
Operating instructions

Opening the doors

Fold back the master sash (door panel) fully until magnets engage



Operate the shoot bolt handle. Firmly grasp the D handle and push or pull until the sashes are partially folded.

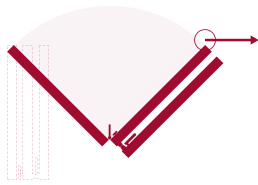


Push the sash stack along the track until stacked together

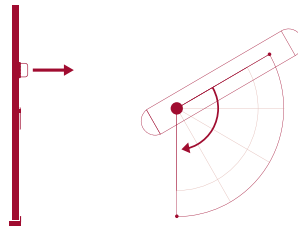


Closing the doors

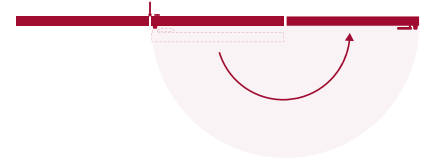
Pull the stack along the track until the D handle can be reached.



Using the D handle whilst holding the doors shut, rotate the shootbolt handle down in to the closed position.



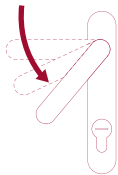
Return the master sash into a closed position.



Operating the lever handle

To open

1 To unlock, rotate the Yale key and then depress handle to dis-engage locks

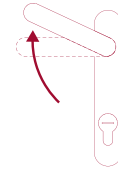


2 To open. Keep handle depressed. Push/pull to open door



To lock

3 To lock, pull handle upwards to engage locks. Rotate Yale key to lock



Operating the shoot bolt handle

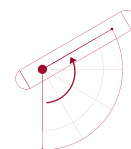
1 To unlock the shootbolt handle insert and turn the black Korniche shootbolt key half a turn. Remove the key.



2 Gently lift the handle away from the door.



3 Rotate the handle whilst holding as shown below to disengage locks. To lock the handle reverse the procedure.





Cleaning

Glass

External dirt can be removed with a soap and water solution. Cleaning solutions used should not be allowed to run down on other surfaces. General household glass cleaners may be used with a soft cloth. Do not use a jet wash.

Panels & Door Frame

Door frames and panels can be cleaned with a soap and water solution. Avoid all solvent based or abrasive cleaners. Take care not to disturb rubber seals and gaskets. Do not use a jet wash.

Tracks & Rollers

Tracks must remain clean and clear of debris at all times. Dust and dirt can build up on the rollers and tracks and effect the smooth running of the door. Tracks can be cleaned by using a soft bristled brush and vacuum with a thin nozzle attachment.

It is recommended every 6 months to thoroughly clean and dry all upper and lower rollers and all hinges.

General maintenance

Hardware fittings

Applying a small amount of light lubricant oil to both hey hole and key will ensure ease of operation and avoid sticking.

Handles

No general maintenance is required for handles. Clean with a non-abrasive cloth and non-solvent general household cleaner



In the unlikely event that your cylinder is snapped under attack due to a forced break-in, YALE will give you £1,000 compensation for any distress and inconvenience caused, that's how confident we are in the YALE lock barrel product.

How does it work? Simply register your guarantee online at help.yale.co.uk within 30 days of purchase to ensure you are covered for five years



10 Year warranty

Korniche products are built to last, but for extra peace of mind they are covered by a comprehensive warranty from the manufacturer. The warranty provided with the products is valid from the day of delivery and importantly extends from the installer to the owner of the property where the products are originally fitted. During the Warranty period, which for domestic non marine environments is 10 years, the goods shall conform to the original specification and be free from material defects in design, material, and workmanship. Claims on the Warranty should be made through the installing company or business from which the products were purchased, but in the event that the company cannot be contacted, your product manufacturer will still honour any covered parts failures with replacements. Details on the Warranty Periods and the full T&C can be found on the Korniche website. Scan the QR code below to view.



01642 309 576

www.gfdhomes.co.uk

