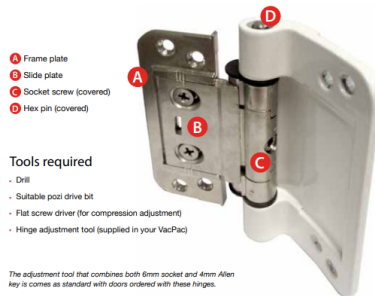


## 3D adjustable hinge instructions



### Tools required

- Drill
- Suitable posi drive bit
- Flat screw driver (for compression adjustment)
- Hinge adjustment tool (supplied in your VacPac)

The adjustment tool that combines both 6mm socket and 4mm Allen key is comes as standard with doors ordered with these hinges.

Additional tools are available from Door-Stop International (part code TPO-ADJUSTMENT-KEY)

### Hanging and removing the door



1 Remove the 2 screws that clamp side plate (B) to frame plate (A) to all three hinges

2 Carefully slide the door away from the frame plates.

3 Replace the door by reversing steps 1 and 2.

## Adjustment instructions (adjust all three at once)

### Compression +1.75mm / -1.75mm



1 Loosen the 2 screws that clamp side plate (B) to frame plate (A)

2 Lever the slide plate (B) with a screwdriver in the adjustment slot

3 Secure the screws in the side plate.

### Vertical +4mm / -4mm

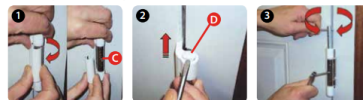


1 Remove the centre covers by hand.

2 With the 4mm allen key tool loosen the socket screws (C) by about 1/3 of a turn.

3 Lift and support the door to the required height whilst securing the socket screws. **Take care not to overtighten.** Replace the covers.

### Lateral (Side-to-side) +3mm / -3mm



1 Repeat steps 1 and 2 of the vertical adjustment to one hinge at a time

2 Carefully remove the top cap and with the 6mm socket tool rotate the hex pin (D).

3 When in position secure the socket screws. **Take care not to overtighten.** Replace the covers.

## Athena 2D Adjustable Hinge Instructions

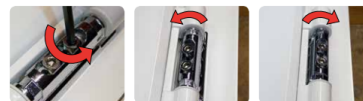


### Tools required

- 4mm Allen Key
- 2mm Allen Key

This hinge allows Lateral and Height adjustment of the door leaf.

### Lateral Adjustment +/- 4mm



Lateral Adjustment: (Note Lateral and height adjustment can be made simultaneously)  
Slacken off both MS Cap Head Screws on all hinges (and ensure they are re-tightened after adjustment)  
The Door can now be moved one way or the other about the nominal position

### Height Adjustment +/- 4mm



Lateral Adjustment: (Note Lateral and height adjustment can be made simultaneously)  
Slacken off both MS Cap Head Screws on all hinges (and ensure they are re-tightened after adjustment)  
The Door can now be moved one way or the other about the nominal position

### Fitting the Cover



Place Cover over Hinge Knuckle with Grub Screw facing inwards towards Door Sash  
Open the door to expose the grub screws and tighten using a 2mm Allen Key

## Challenger 3D Butt Hinge Instructions

### Tools required

- 4mm Allen Key
- 5mm Allen Key

### WARNING

It is not recommended to fully adjust either one adjuster only or one hinge only. Adjustments should be made gradually, aligning each pair of marks on each hinge until the desired adjustment is achieved.

### Compression +0.5mm / -0.5mm (5mm Allen Key)



Remove the top cap.

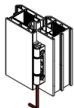
Check pin alignment via mark on top of pin. If the mark is pointing towards the door sash, the adjustment is in the neutral setting.

To increase compression, turn the pin so that the alignment mark is moved towards the door frame.

To reduce compression, turn the pin so that the alignment mark moves away from the frame.

Replace cap.

### Vertical Adjustment +3.0mm / -0.0mm (5mm Allen Key)



Remove the bottom cap.

To raise door sash, rotate the vertical adjustment screw clockwise. Ensure that all other hinges are adjusted equally.

To lower door sash rotate the vertical adjustment screw anti clockwise. Ensure that all other hinges are adjusted equally.

Replace cap.

### Lateral Adjustment +2.0mm / -2.0mm (4mm Allen Key)



Remove the side cover caps.

Rotate the lateral adjustment drives in the direction required. Ensure that each pair of alignment marks are at the same point.

Replace caps.

### IMPORTANT

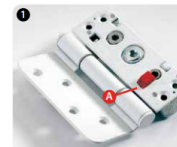
Remember to tighten the grub screw after adjusting the Challenger Hinge.



## Avocet Affinity 3D Hinge Instructions

### Tools required

- 5mm Allen Key



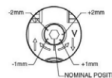
With the door upright pull out and dispose of the red locking wedge (A)



**Compression**  
4.0mm ( ± 2.0mm )



**Lateral Adjustment**  
8.0mm ( ± 4.0mm )



**Vertical Adjustment**  
1.5mm ( ± 0.75mm )

DO NOT FORCE THE ADJUSTMENTS BEYOND THEIR TOLERANCE