

Locks and Keeps

At Comp Door we offer two different types of multipoint locks. These are purchased through Avantis Hardware with the options are as follows:

- Auto Fire 3 Latch Contemporary Lock
- Heritage Auto Fire 3 Latch Lock

Auto Fire 3 Latch Contemporary Lock

The first lock we have available is called the Auto Fire 3 Latch Contemporary Lock. This includes 3 latches spaced top to bottom and is an auto fire locking system.

An auto fire lock basically means, when the door is shut into the outer frame all 3 latches engage into the outer frame providing consistent compression. If the door has been supplied with an inline lever/lever handle. It means the handle does not need to be lifted once the door has been shut into the frame.

The centre gearbox is located centrally meaning the key hole is set at midrail height.

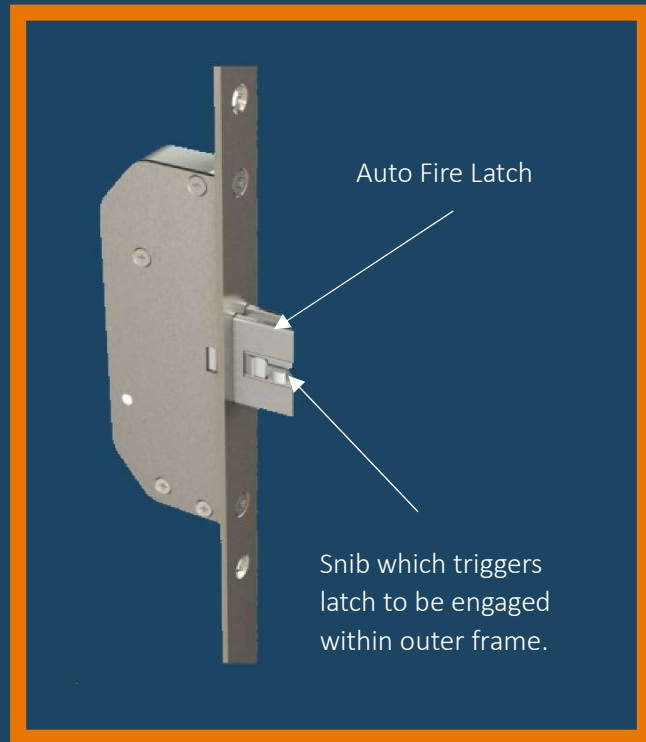
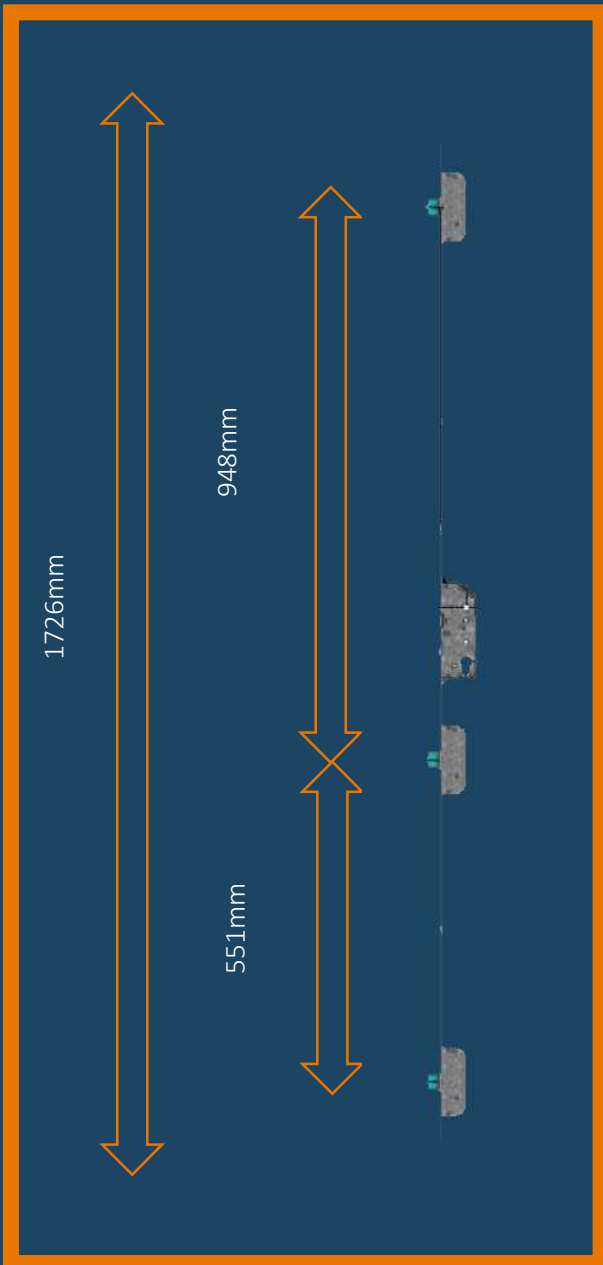
Measurements down from the top of the slab and frame are as follows:

- 920mm down from the top of the slab to the spindle centre
- 981mm down from the top of the frame to the spindle centre
- 1012mm down from the top of the slab to the centre of the keyhole
- 1073mm down from the top of the slab to the centre of the keyhole

Features of the Auto Fire 3 Latch Contemporary Lock-

- Security Latches which are designed for optimal security and compression.
- PAS24:2016 Compliant- Full compliance to security standards
- Operation tested to over 50,000 cycles.
- Gearbox: Zinc/Steel Zinc plated and sealed
- Centre Keep: Steel top plate, zinc plated and sealed.

| Key Features | Explanation |
|---------------------------|---|
| 45mm Backset | Measurement from the edge of the door to the centre of the keyhole |
| Central Cylinder Location | Keyhole positioned in the centre of the door |
| 20mm Radius end faceplate | Lock faceplate width is 20mm left to right |
| 92mm PZ Lever Function | Measurement from the centre of the keyhole to the centre of the spindle |
| 4 Reversible Latches | Locks are non-handed, meaning latches can be turned around to suit both Left and Right hinged doors |
| 20mm Latch Throw | Distance thrown when locked into the Outerframe |



- Lock strip 1726mm top to bottom.

Heritage Auto Fire 3 Latch Lock

The second lock we have in our offering is called the Heritage Auto Fire 3 Latch Lock. This is a key only operated lock, which means it is not supplied with Lever/Lever Handles. Just oval escutcheons or finger pulls. This also includes latches to engage into the frame. However, instead of having 4 latches this Heritage lock has 3. Just like the 4-latch contemporary the 3 latches automatically engage into the outer frame as soon as the door is shut.

It eradicates having to turn the key to engage the latches. As some multipoint locks on the market, they key must be turned to engage latches or hooks.

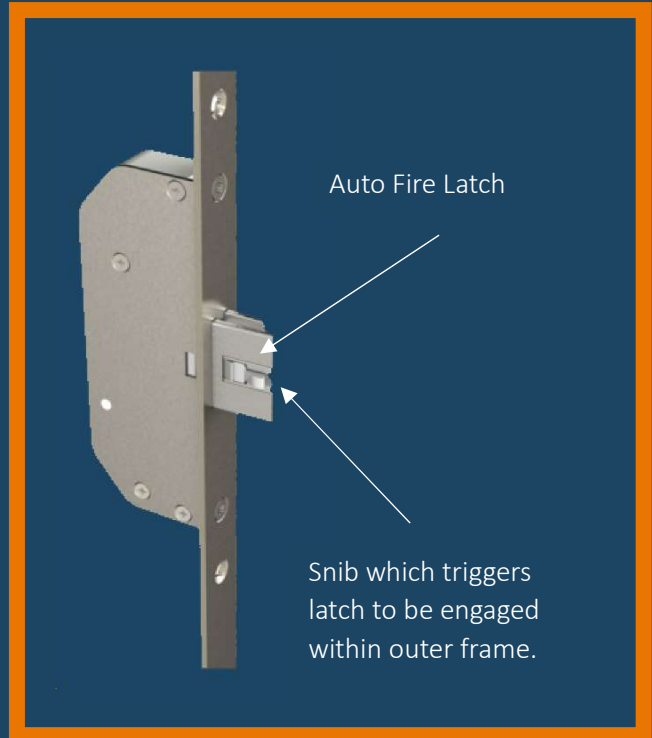
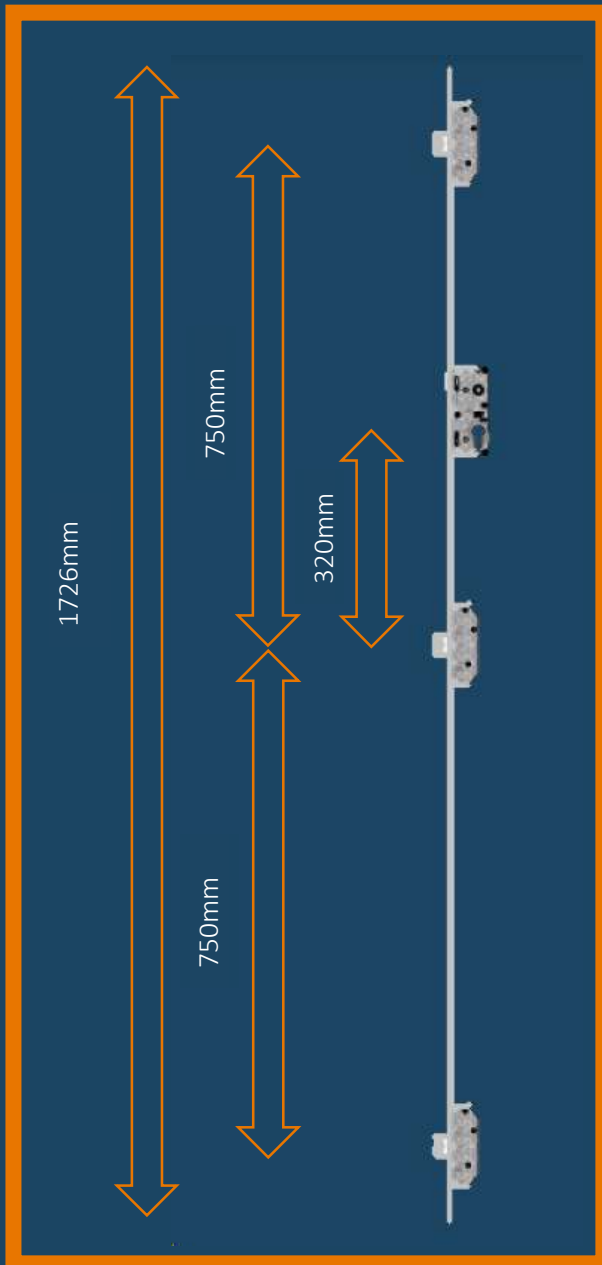
One of the other differences between the 4 latch and the 3 latch is the cylinder/keyhole position. On the 3-latch heritage the cylinder is located $\frac{3}{4}$ up the door slab.

- 647mm from the top of the door slab to the centre of the keyhole
- 708mm from the top of the frame to the centre of the keyhole

Features of the lock include:

- Security Latches, designed for optimal security and compression.
- PAS24:2016 Compliant
- Operation tested for over 50,000 cycles.
- Gearbox: Zinc/Steel plated & sealed
- Centre keep: Steel top plate, zinc plated & sealed.

| Key Features | Explanation |
|--|---|
| 45mm Backset | Measurement from the edge of the door to the centre of the keyhole |
| Elevated Cylinder Location | Cylinder/Keyhole position $\frac{3}{4}$ the way up the door. Heritage type look |
| 20mm Radius End Faceplate | Lock faceplate width is 20mm left to right |
| 92mm PZ Lever Function | Measurement from keyhole centre to spindle centre |
| 3 Reversible Latches (Allen Key) | Lock is non-handed, meaning latches can be turned around to suit hinged left and hinged right doors |
| Key Retractable Latches | Latches can be pulled back with the key to unlock the door |
| 20mm Latch Throw | Distance thrown when latches are locked into the Outerframe |
| Central Latch to provide optimum compression | Latches spaced equally top to bottom |



- Lock strip 1726mm top to bottom.
- 750mm between the centre of each latch
- 320mm from the centre of the keyhole to the centre of the middle latch

Auto Fire Keeps

What is a “Keep”

A keep is a zinc plated and sealed piece of steel, the keep is prepped on the outer frame of the door and is routed in a specific position to ensure it lines up with the latches on the multipoint lock.

On every door frame, there will always be keeps prepped and supplied by a manufacturer and the sole purpose/function of the keeps is to allow the door to be locked into place providing maximum compression with the door gasket.

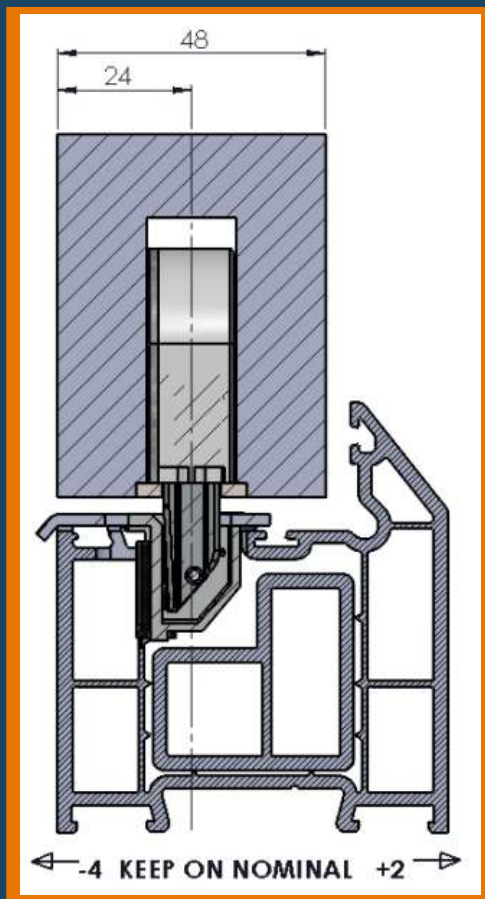
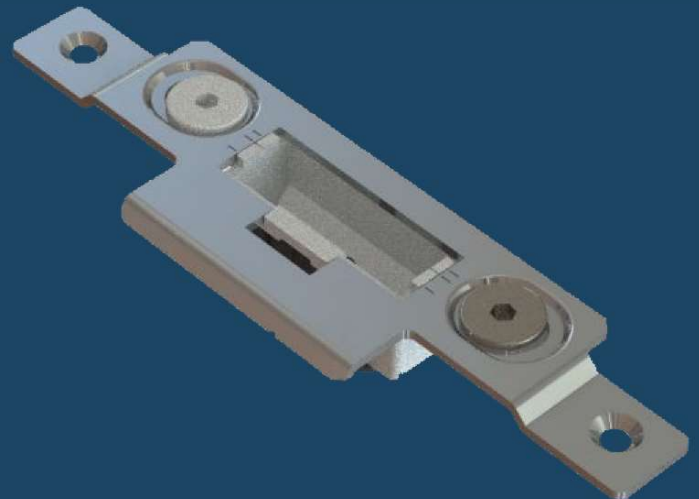
Over time the keeps may need to be adjusted to find the right balance between compression and operation.

How many keeps are supplied per door frame?

| Lock | Quantity of Keeps per door frame |
|-------------------------------------|----------------------------------|
| Auto Fire 3 Latch Contemporary Lock | 3 |
| Heritage Auto Fire 3 Latch Lock | 3 |

Key Features

- 4mm/+ 2mm Adjustment
- Friction free runners for smooth operation
- Protective frame strike
- 2 fixing points
- Dust box to neaten prep detail
- Markings for alignment with latches



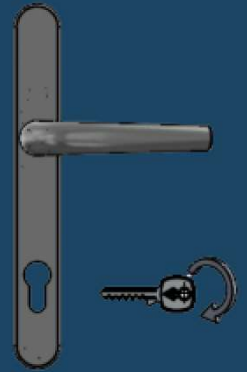
Operating Guide

Lever Handle Operation- 92mm Centres

To lock the door from the Inside or the Outside. Simply:

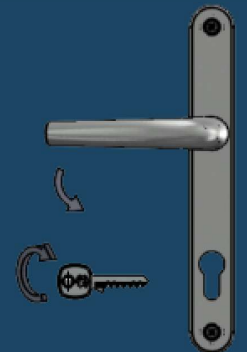
1. Close the door to engage all the locking points on the mechanism automatically.
2. Turn the key to fully deadlock.

(Door can be opened by pushing the handle down if the key/thumb turn is not turned)



To unlock from the Inside or the Outside. Simply:

1. Turn the key to unlock the deadbolt mechanism.
2. Push the lever handle downwards to retract the latches away from the keeps on the outer frame.
3. Push/Pull the door open.



Key Operation- (Escutcheon/Pull Plate only, Internal and External)

To lock the door from the Inside or the Outside. Simply:

1. Close the door to engage all the locking points on the mechanism automatically.
2. Turn the key to fully deadlock.



To unlock from the Inside or the Outside. Simply:

1. Turn the key to unlock the deadlocking mechanism.
2. Continue to rotate the key until the latches retract away from the keeps on the outer frame.
3. Push/Pull the door open.

