



FIRE DOORSETS

from door-stop®



ACCREDITATIONS

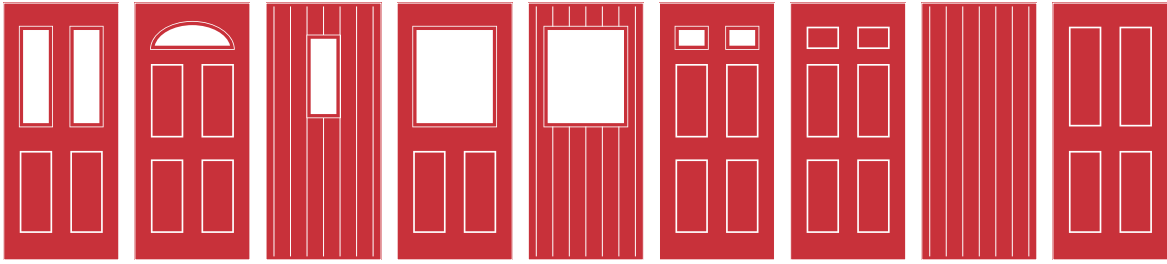


CERTIFICATION OPTIONS

	FD30	Tested for cold smoke leakage	Certifire	Certisecure	SBD accredited
SINGLE CERTIFICATION	✓	✓	✓ CF 5906	-	-
DUAL CERTIFICATION	✓	✓	✓ CF 5863	✓ CS 5112	✓

Certificates can be downloaded from warringtonfire.com

DOOR SET STYLES



DOOR SET COLOURS

INTERNAL & EXTERNAL COMBINATIONS AVAILABLE



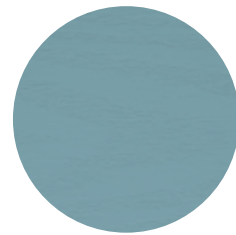
Red



Black



Chartwell



Duck Egg Blue



Cream



Black Brown



Poppy Red
(High Gloss)



Green



White



Blue



Grey

FURNITURE COLOURS



Gold



Chrome

LOCK & CYLINDER



UAP Kinetica 3★
BSi Kitemarked Euro Cylinder

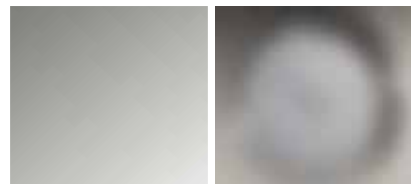


GU Multipoint Lock

GLASS OPTIONS

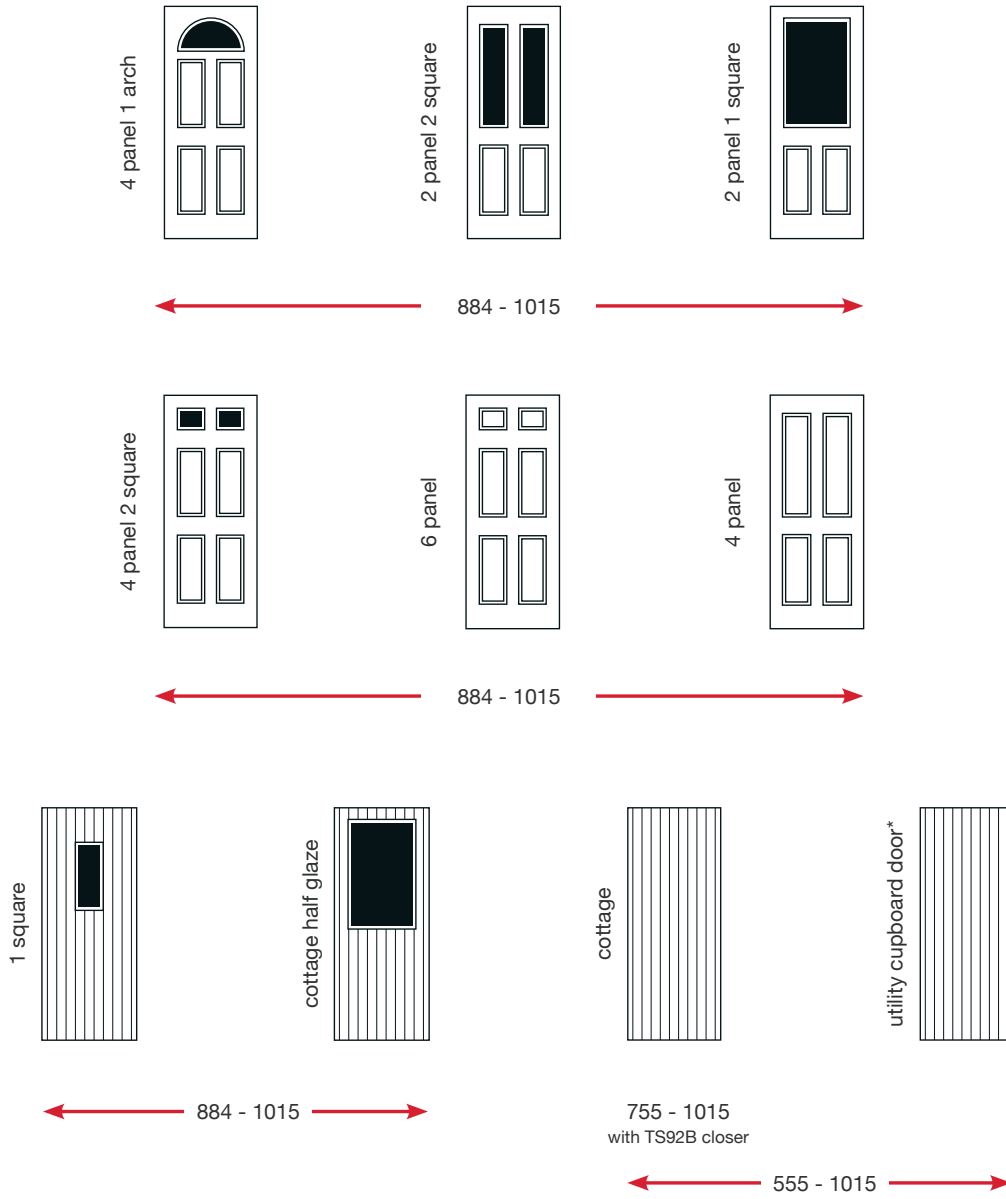


Clear



Stippolyte

DOOR SET WIDTHS



DOOR SET HEIGHTS

	MIN HEIGHT	MAX HEIGHT
DOORSET ONLY	1971	2079
INCLUDING TOPLIGHT (min 212 - max 421)	2181	2500

*Utility Cupboard Door is supplied without door closer and with "Fire Door Keep Locked" signage.

All measurements in millimetres

CLOSERS

The Door-Stop fire doorset is available with two options of surface mounted door closers. The TS72 closer can be fitted on the internal face of the door only, and the TS92 slide arm closer is suitable to be fitted to the internal or external face of the doorset. Both closers are available in gold and chrome finish and the fixing positions are pilot drilled for installation on site.



Also available in Gold

DORMA TS72

SURFACE MOUNTED

- ✓ Rack and pinion v-arm closer
- ✓ Surface mounted on internal face of doorset
- ✓ Variable closing force EN 2-4
- ✓ Tested and CE marked to EN 1154
- ✓ Third party certificated by Certifire under CF 268

DORMA TS92

SURFACE MOUNTED

- ✓ Cam action, slide arm closer
- ✓ Surface mounted on internal or external face of doorset
- ✓ Variable closing force EN 1-4
- ✓ Tested and CE marked to EN 1154
- ✓ Third party certificated by Certifire under CF 119



Also available in Chrome

SPECIFICATION OVERVIEW

SINGLE CERTIFICATION	FD30S Fire doorset tested to BS 476: Part 22 or BS EN 1634-1:2014 Certificated to BS 476:Part 22 by Warringtonfire Certifire scheme. Certificate number CF 5906. Tested for cold smoke leakage to BS EN 1634-3 Capable of meeting Approved Document Q (Part Q), Security – Dwellings.
DUAL CERTIFICATION	FD30S Fire and Security doorset tested to BS 476: Part 22 or BS EN 1634-1:2014 Certificated to BS 476:Part 22 and PAS 24:2016 by Warringtonfire Certifire and Certisecure schemes. Certificate numbers CS 5112 / CF 5863 Tested for cold smoke leakage to BS EN 1634-3 Accredited by Secured by Design
INTEGRITY/INSULATION	DSI fire doorsets are certificated for 30 minutes fire integrity and only suitable for use when fire insulation is required if the doorset has less than 20% of un-insulating glass, including any toplight.
FRAME	Timber hybrid frame. Low maintenance UPVC outer skin with sustainable sourced timber core reinforcement providing structural stability for all key compartments.
TOPLIGHT CONSTRUCTION	Four sided frame with dedicated hardwood coupler
THRESHOLD OPTION	Low threshold in aluminum for accessibility
LOCKING MECHANISM	GU Multipoint slam lock with intumescent protection
CYLINDER	UAP Kinetica Euro Cylinder BSi 3* Kitemarked
GLAZED APERTURES	Insulated glass unit, argon filled with 7 mm Pilkington Pyrodur and 6.8 mm thick Pilkington K Clear laminated glass or Pilkington K P1A Stippolyte glass.
GLAZING CASSETTE	Colour matched cassette
HARDWARE / FURNITURE	Certifire approved TS008 letterplate with security cowl. Eyeviewer available at low and high height for wheelchair accessibility. Trojan Surface mounted knocker. Fully suited in gold /chrome. Trojan surface mounted urn knocker. Fully suited in gold or chrome
HANDLE TYPE	Lever/Lever Solid Spindle
HINGE TYPE	3 x Grade 13, CE marked stainless steel butt hinges in chrome with intumescent protection.
CLOSER	Certifire approved surface closers, Dorma TS72V arm closer and Dorma TS92 slide arm closer. Pilot holes prepared for installation on site.

SINGLE CERTIFICATED



DUAL CERTIFICATED



Door-Stop International Limited reserves the right to alter specifications and descriptions without prior notice as part of our policy of continual development. This may affect pricing within your quote.